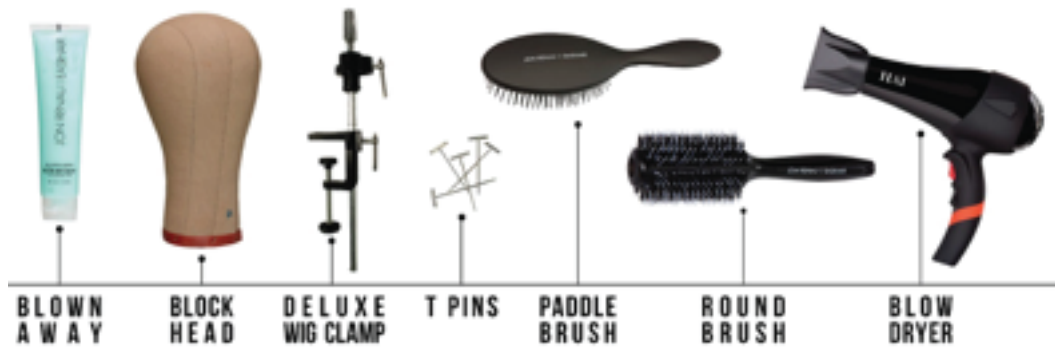


# JON RENAU HUMAN HAIR STYLING TIPS



## DRY

1. Pinning: When pinning to a block head, be sure to only pin through the ear tabs and nape area; DO NOT pin through delicate base materials
2. Use a paddle brush to detangle when wet; apply a small amount of Blown Away throughout and use your round brush to blow dry smooth
3. Blow dry with med-high heat in a downward motion to smooth hair; work in smaller sections to ensure you dry the hair completely

**Allow your cap to dry completely on a wig stand before wearing or pinning to a block head.** If the cap is still damp, it will cause stretching and change the size, causing improper fitting.



## STYLE

### WEIGHTLESS VOLUMIZING FOAM

- Use 1-2 pumps on damp hair to create volume and lift when blow drying



## STYLE

### HEAT TREAT THERMAL SPRAY

- Mist 1-2 pumps onto each section before flat ironing or curling; this will protect the hair from heat damage



## FINISH

### BOHO BEACH MIST

- Mist into hair after drying to add beachy texture to waves



## FINISH

### PIECE OUT CONTOUR FIBER CRÈME

- Use a small amount on finger tips and apply to areas you want to create texture. A little goes a long way



## FINISH

### VERSATILE 3-WAY HAIR SPRAY

- Mist a small amount over your finished style for light hold; layer more for a stronger hold
- Use the adjustable nozzle to control the amount of product dispensed